



Thermal Imaging

Need a thermal inspection for insurance purposes?

Thermal imaging can save downtime by detecting heating on cables, components, and terminations before they become a major problem.

What we do:

- Attend site, take images of equipment under load.
- Repair any immediate concerns or simple problems on-site if found.
- Produce a report detailing the thermal condition of the equipment with actions required, if any.
- Any other remedial work can be quoted first.

Equipment we inspect:

- Switchboards.
- Motor starters, VSDs and soft starters.
- Cabling.
- Electric motors.
- Metering equipment.

Electrical equipment needs regular inspection and maintenance to keep it operating as expected, avoid unexpected shutdowns and reduce the chance of electrical fires.

We can also offer:

- LED lighting upgrades.
- Stray voltage inspection and reporting.
- Irrigation and dairy shed inspection and reporting.
- Appliance test and tagging.



Case Study: Mains Changeover Switch Heating

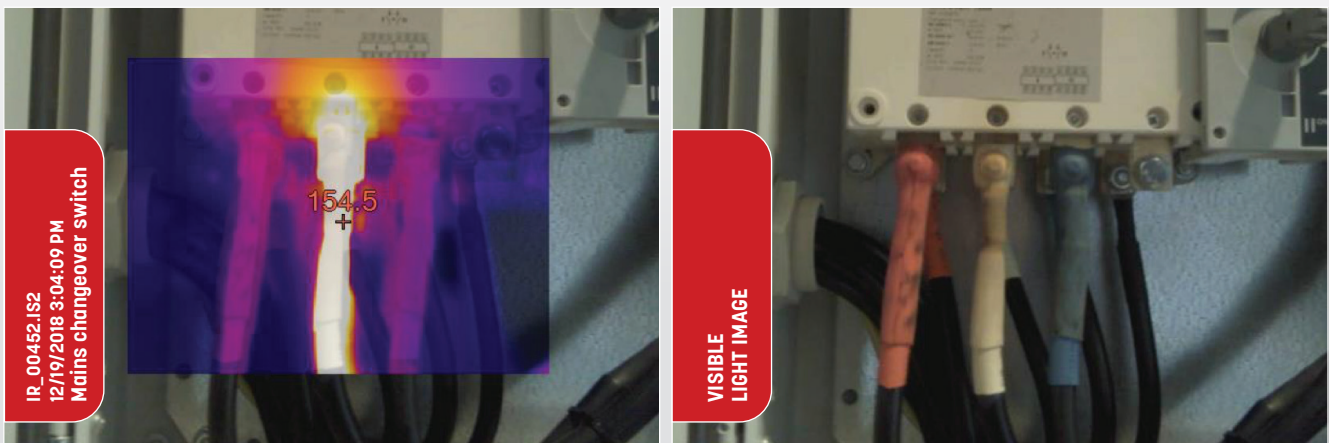
In this case we were called on-site to conduct a thermal image report of the whole dairy shed installation. To the naked eye the changeover switch and associated cable looks in good service condition.

With the thermal image camera, we were able to see an immediate fault. The connection on the bottom of the changeover switch was exceeding 170 degrees.

We notified the customer and isolated the site. Then repaired the heated connection.

If this issue had gone undetected, the connection would have heated further, damaging the switch and possibly causing a fire.

The thermal imaging and repair costs were more than covered by preventing the changeover switch failure.



MAIN IMAGE MARKERS

Name	Hottest Point
Temperature	176.0°C



IMAGE INFO

File name	IR_00444.IS2
Background temperature	22.0°C
Emissivity	0.95
Image Range	20.2°C to 176.0°C
IR Sensor Size	320 x 240
Camera Manufacturer	Fluke Thermography
Image Time	12/19/2018 2:59:50 PM
Calibration Range	-20.0°C to 250.0°C
Distance to Target	-1.12m
Severity	Severe

Nairn Electrical have been proudly supporting rural Canterbury since 1975.

With a long track record of on-farm installation, servicing and upgrades, they not only have the electrical expertise, but understand local farms, their history and specific needs. With a 7 day a week breakdown service and a full range of preventative maintenance and productivity solutions they are the rural electrical specialists.



North Canterbury: 03 313 6104

Leeston: 03 324 3752

office@nairnelectrical.co.nz

www.nairnelectrical.co.nz